

# Bang & Olufsen

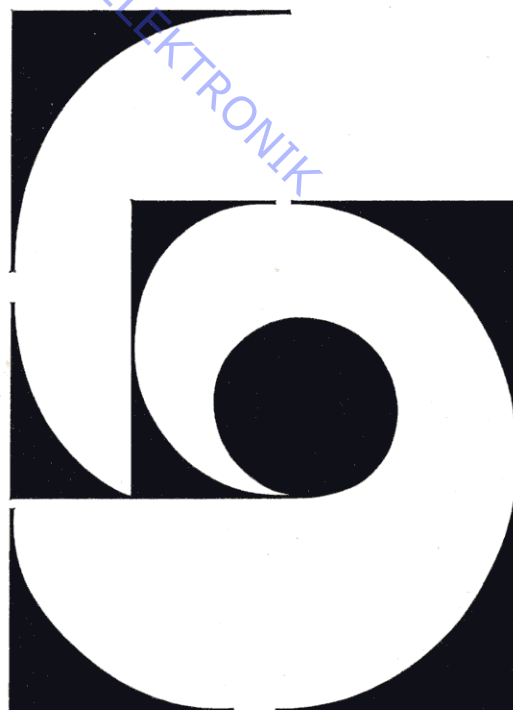
## BEOCENTER 7007

TYPE 1821

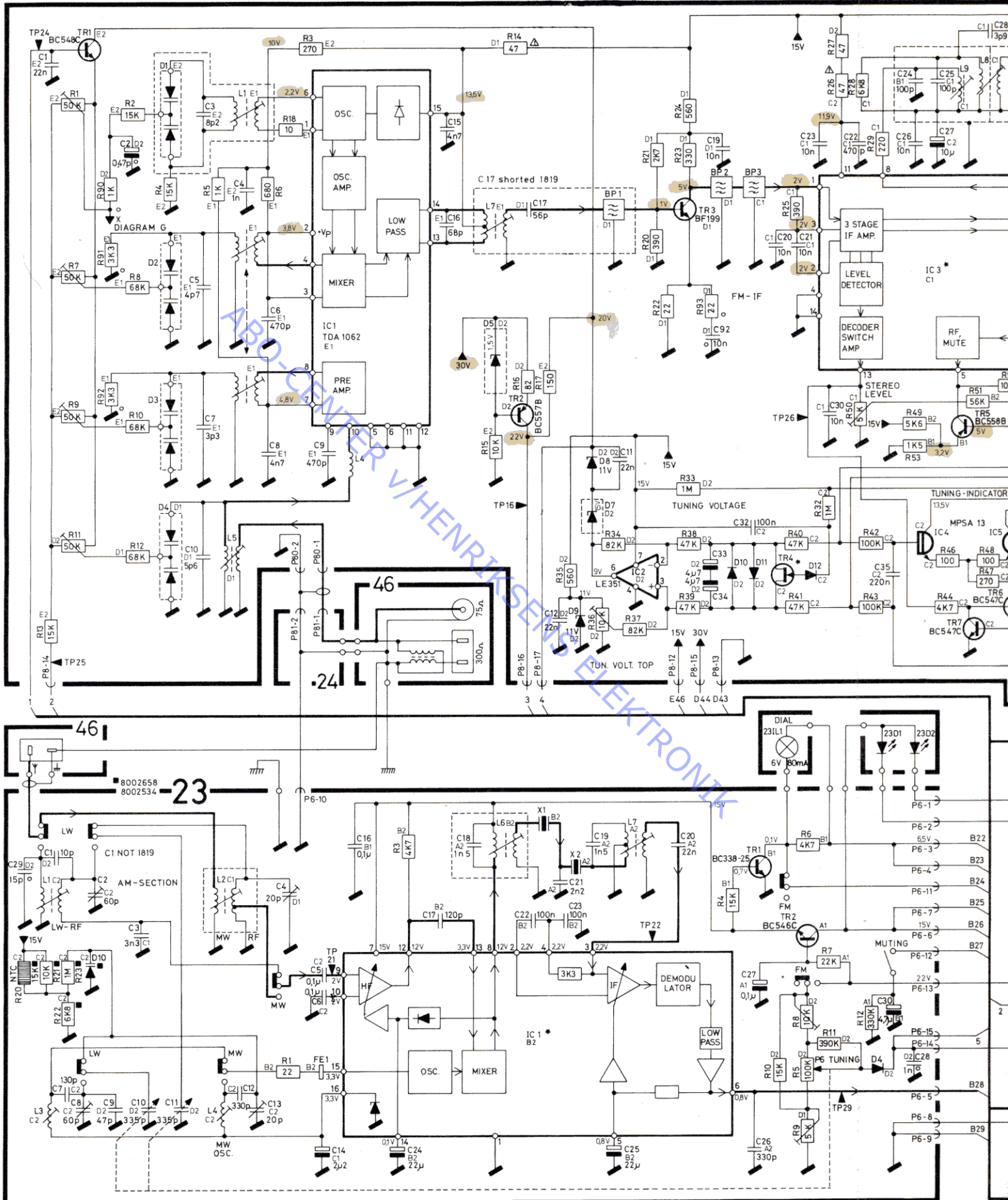
## TERMINAL

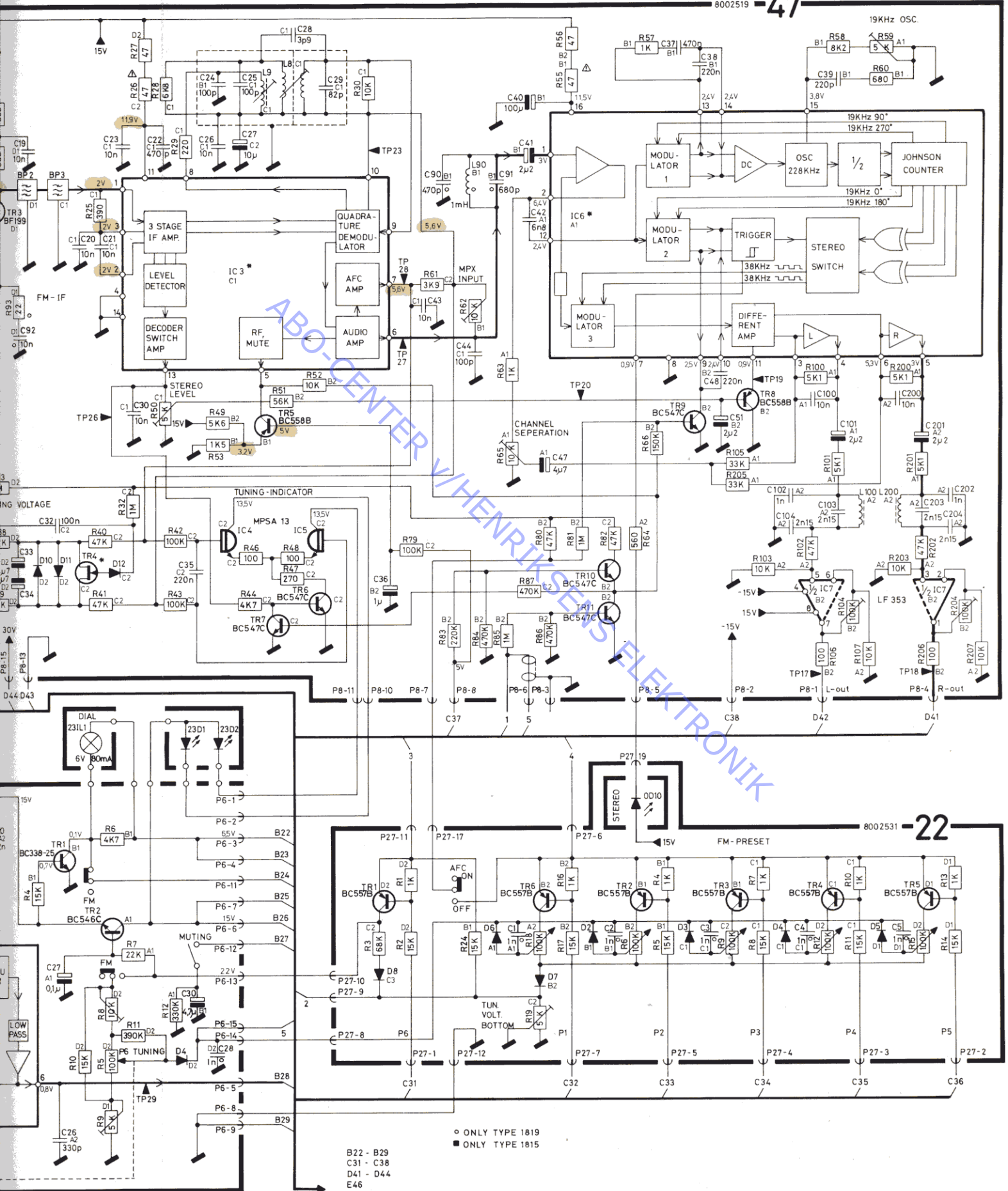
TYPE 2043

ABO-CENTER V/HENRIKSENS ELEKTRONIK



INDKLÆBES I SERVICEANVISNING BEOCENTER 7700, TYPE 1811 - 3538548/  
TO PASTE IN SERVICE MANUAL BEOCENTER 7700, TYPE 1811 - 3538548





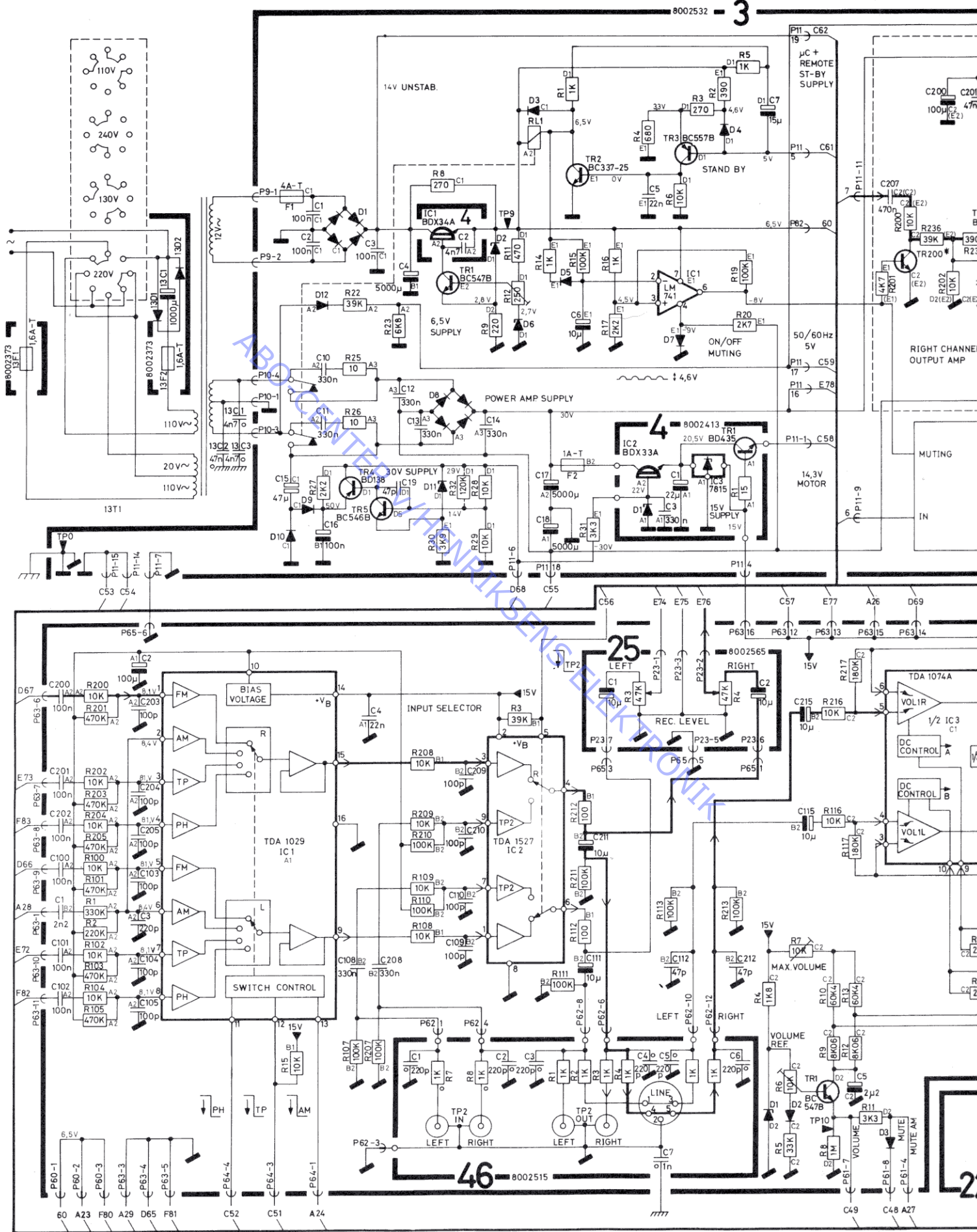
○ ONLY TYPE 1819  
■ ONLY TYPE 1815

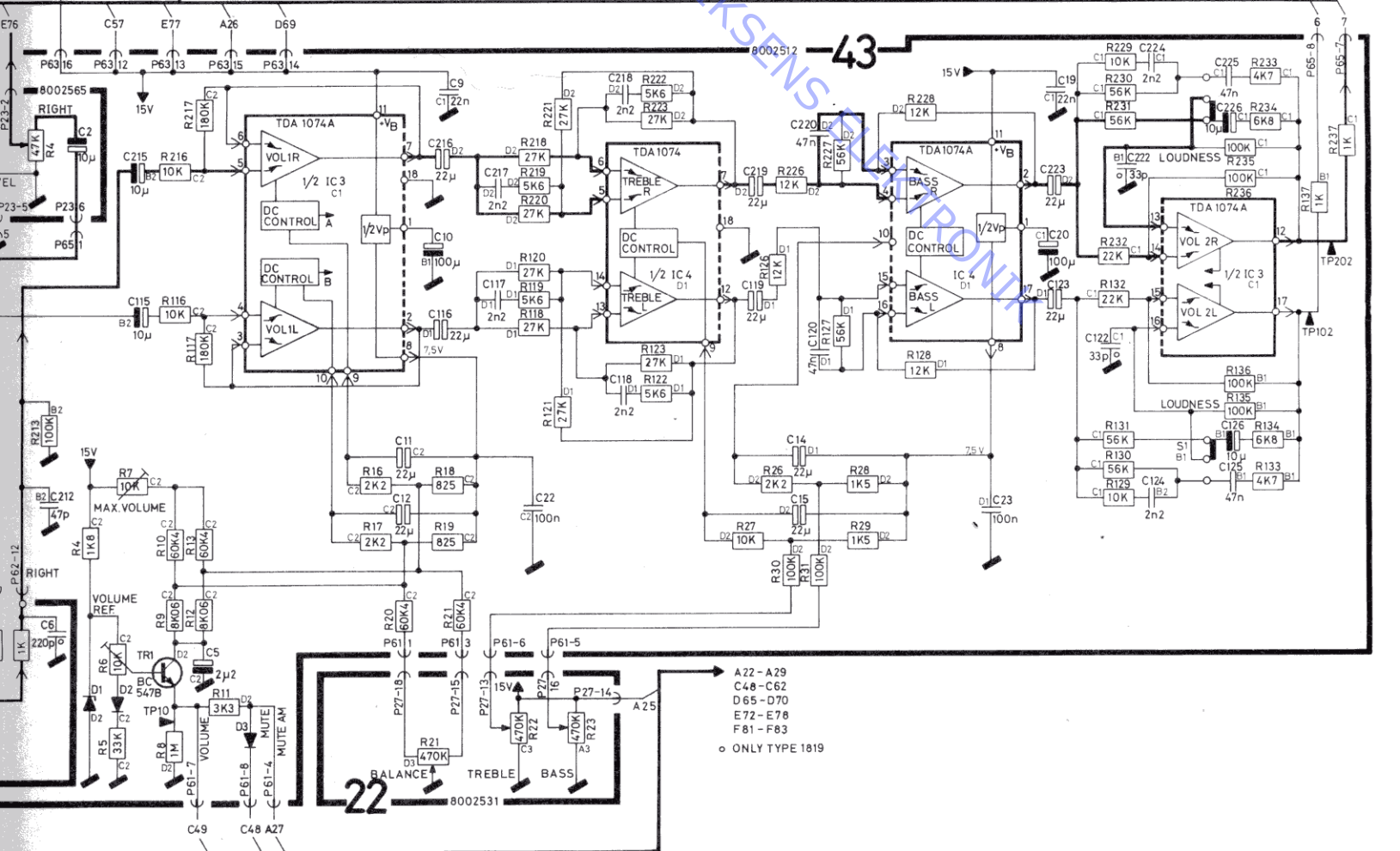
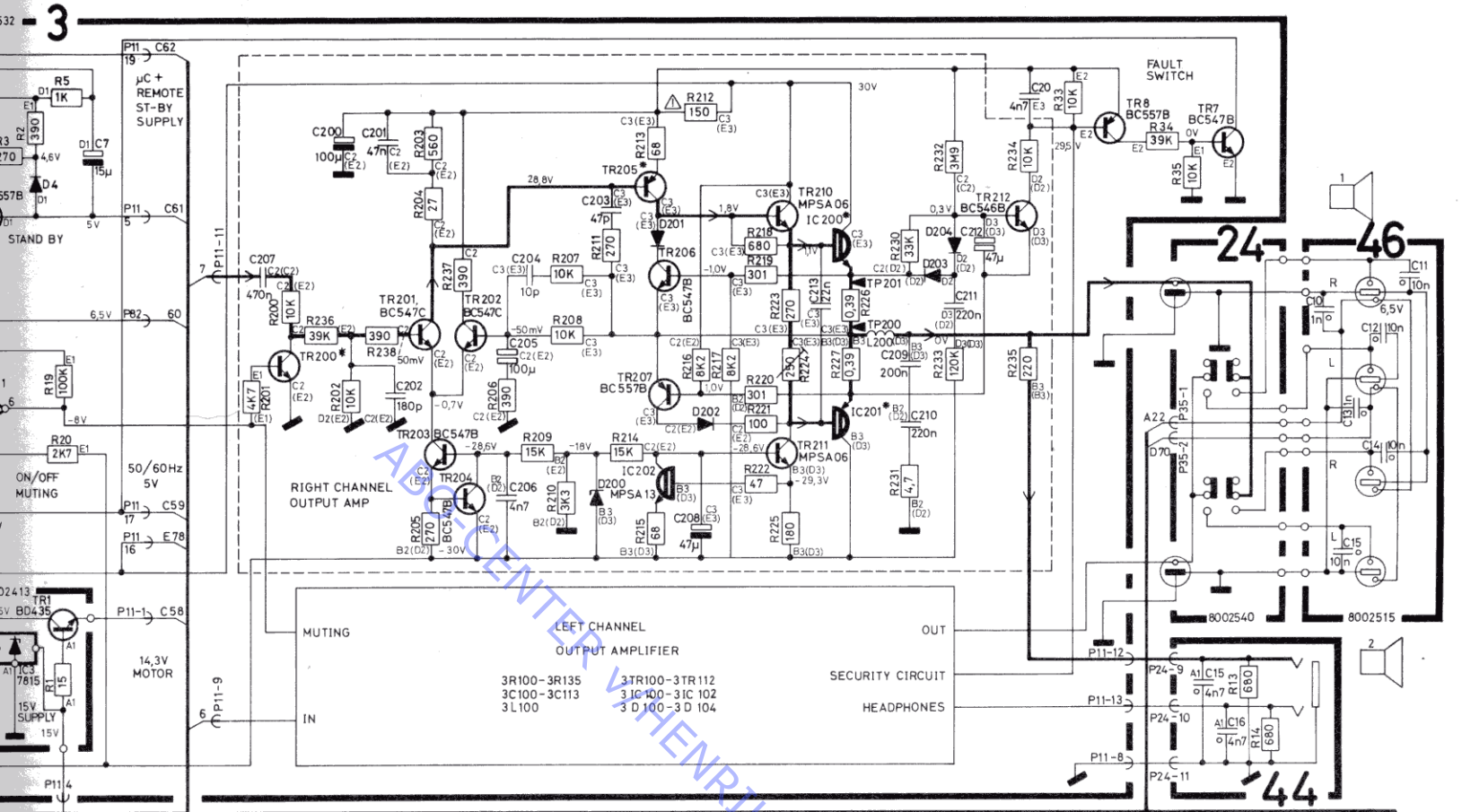
B22 - B29  
C31 - C38  
D41 - D44  
E46



# Bang & Olufsen

## DIAGRAM B

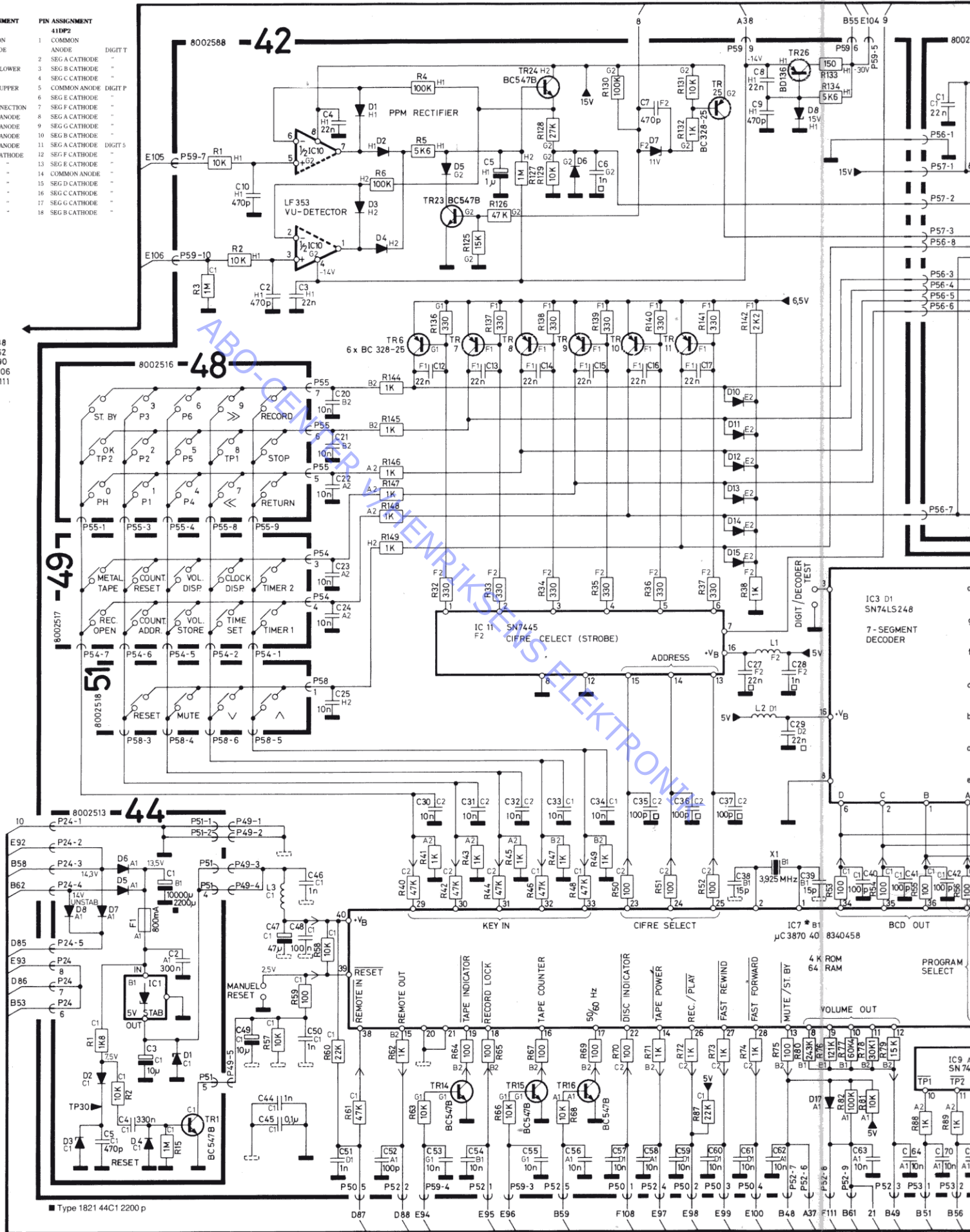




## DIAGRAM C

PIN ASSIGNMENT 41DP1		PIN ASSIGNMENT 41DP2	
1	COMMON CATHODE (DOTS)	1	COMMON
2	COLON LOWER ANODE	2	SEG A CATHODE
3	COLON UPPER ANODE	3	SEG B CATHODE
4	NO CONNECTION	4	SEG C CATHODE
5	DIGIT 4 ANODE	5	COMMON ANODE
6	DIGIT 3 ANODE	6	SEG E CATHODE
7	DIGIT 2 ANODE	7	SEG F CATHODE
8	DIGIT 1 ANODE	8	SEG G CATHODE
9	SEG C CATHODE	9	SEG A CATHODE
10	SEG G CATHODE	10	SEG B CATHODE
11	SEG D -	11	SEG A CATHODE
12	SEG E -	12	SEG F CATHODE
13	SEG F -	13	SEG C CATHODE
14	SEG A -	14	COMMON ANODE
15	SEG B -	15	SEG D CATHODE
		16	SEG E CATHODE
		17	SEG G CATHODE
		18	SEG B CATHODE

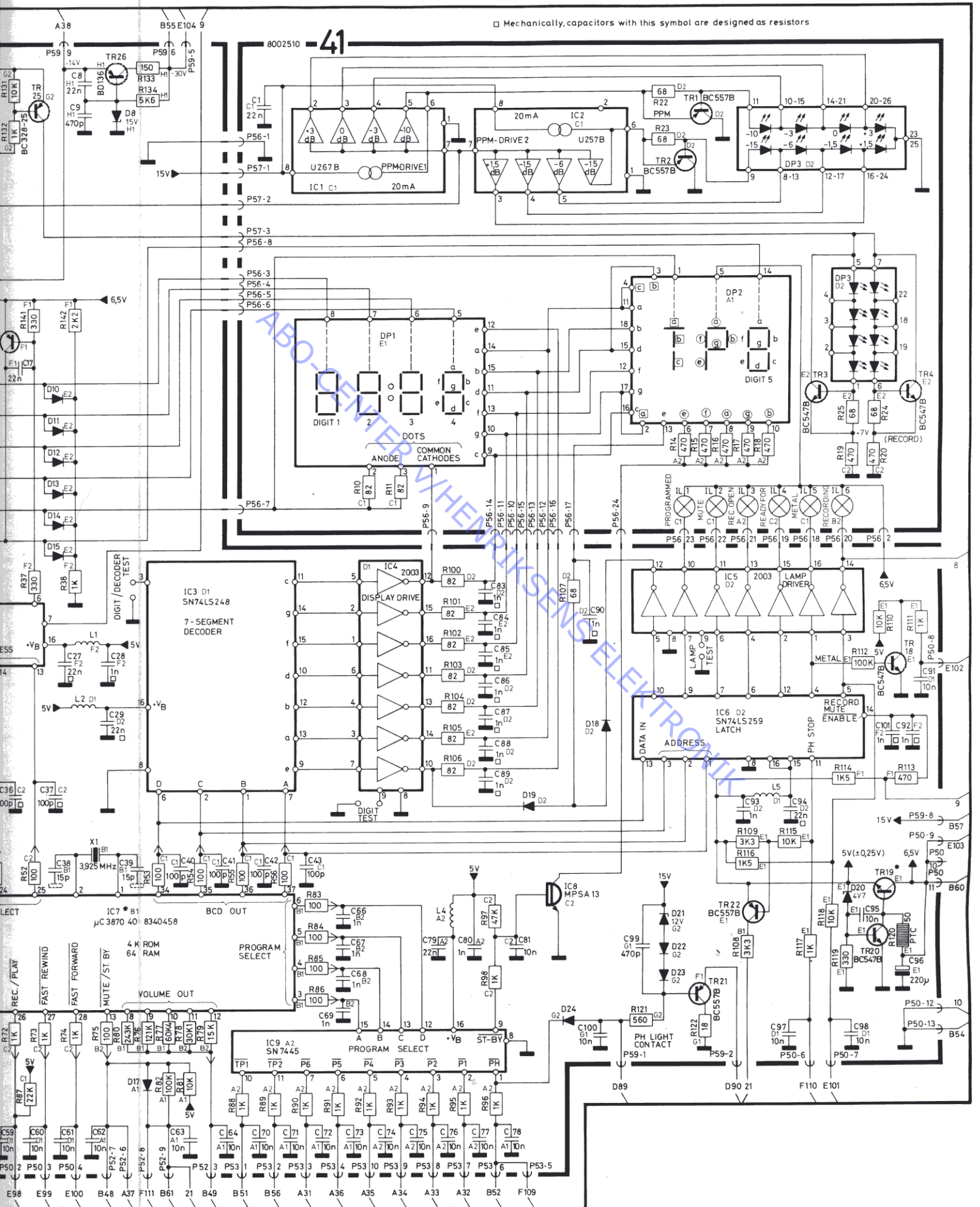
A31 - A38  
B48 - B62  
D85 - D90  
E92 - E106  
F108 - F111

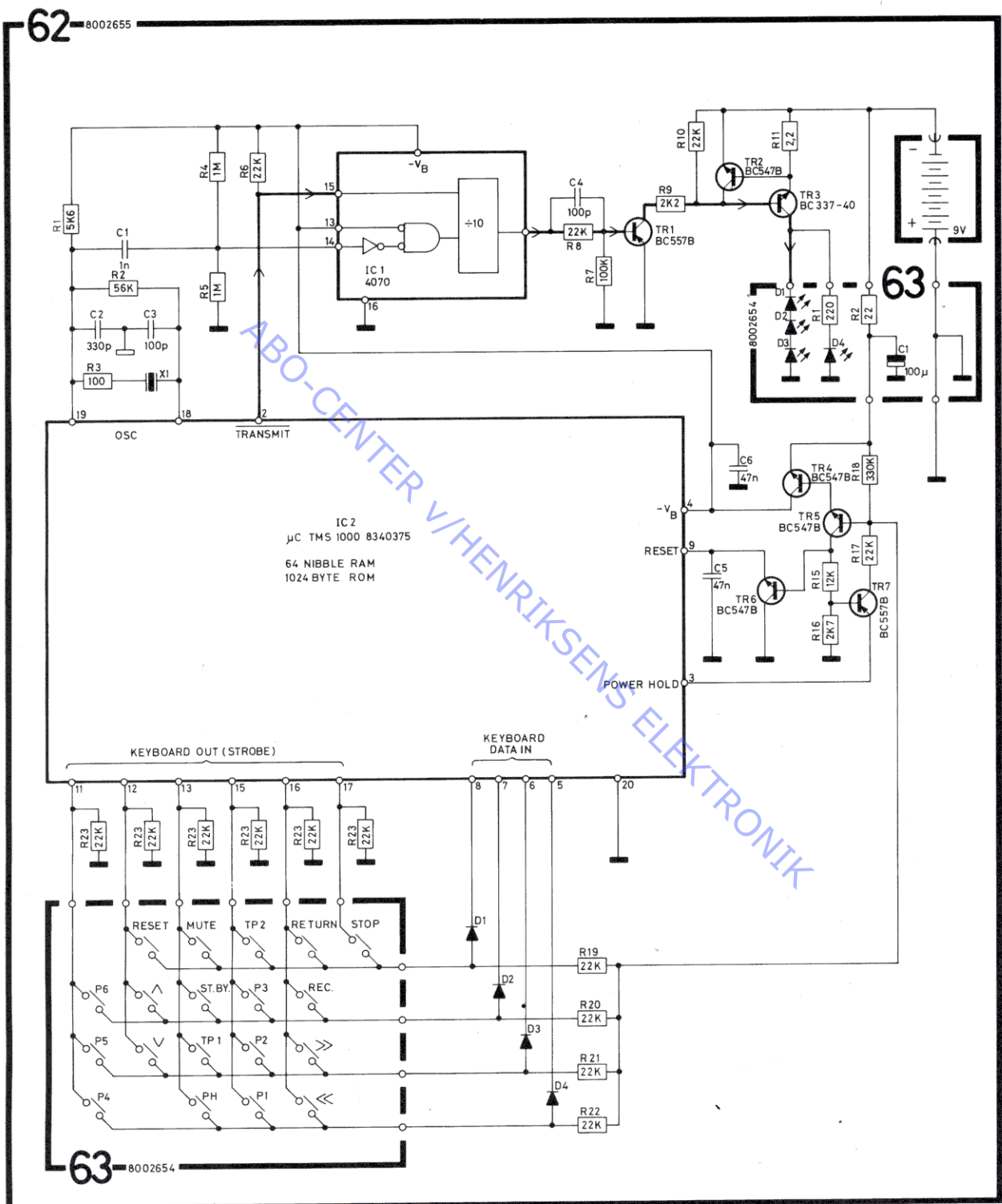


8002517 -49  
8002518 51  
8002516 -48  
8002588 -42  
8002513 -44

Type 1821 44C1 2200 p



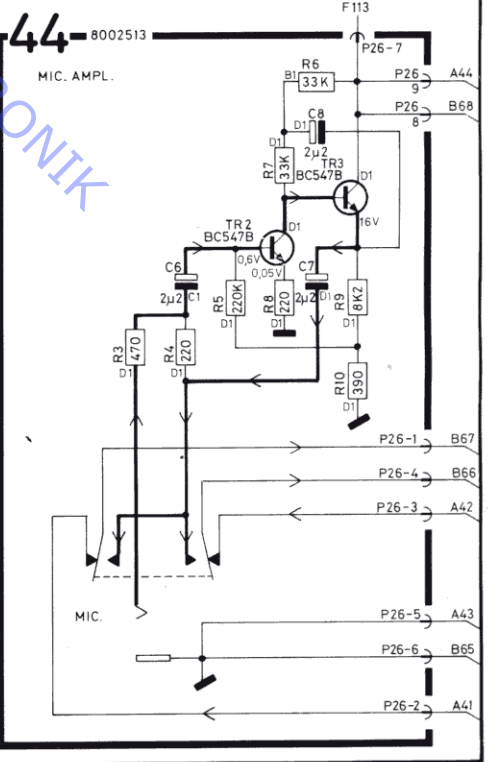
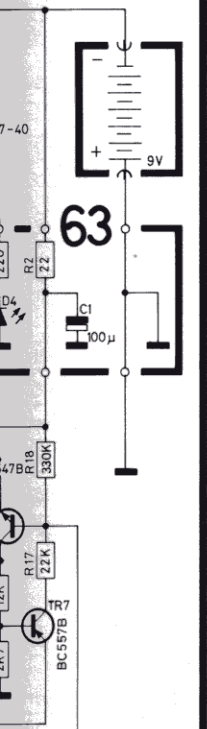
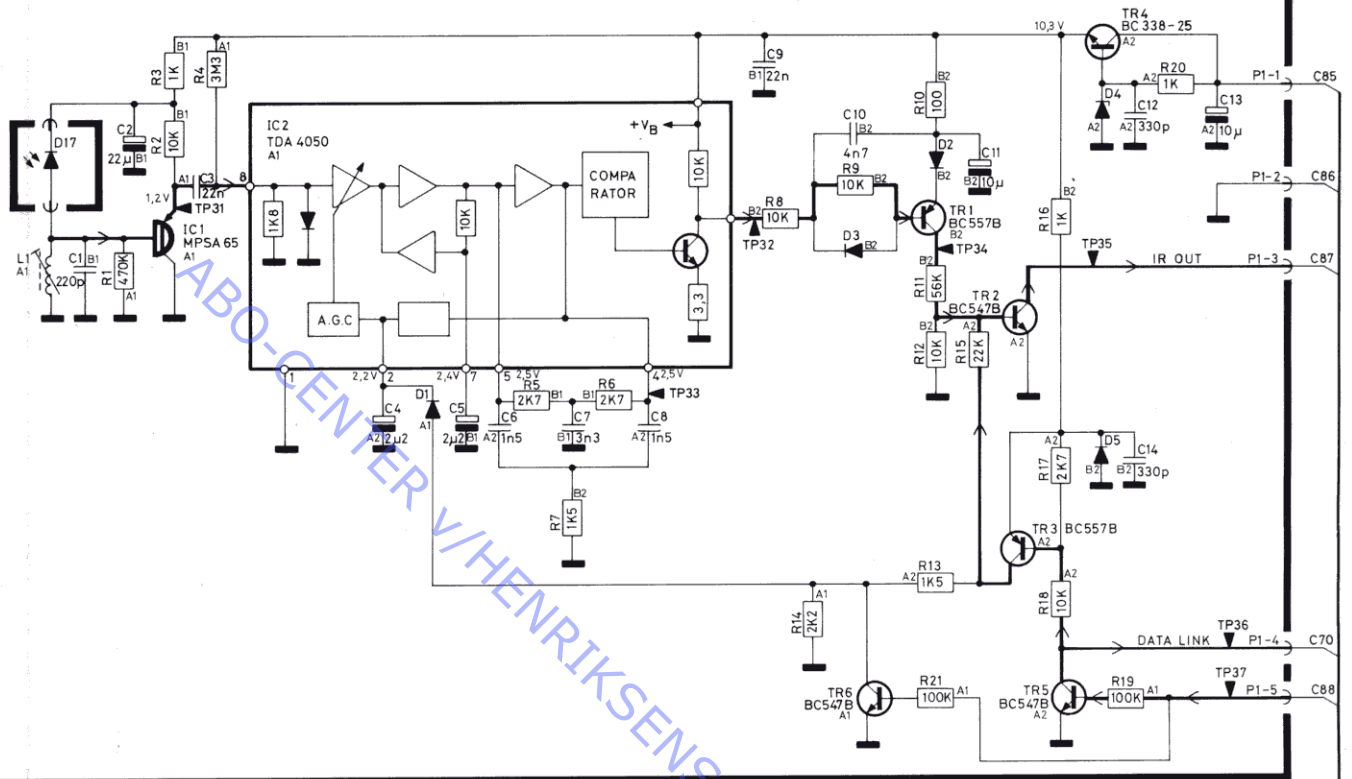


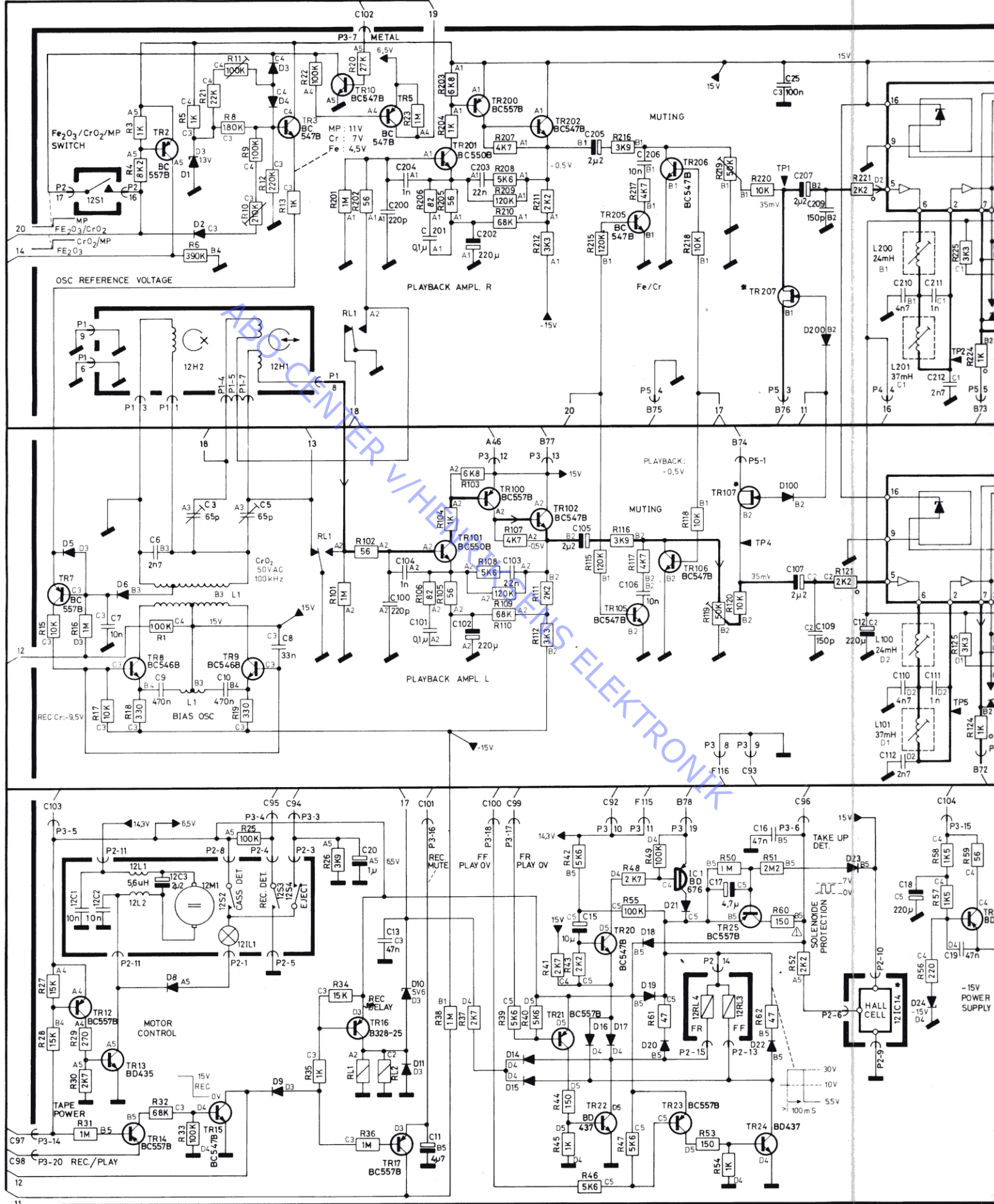


N.B. Module 62 and 63 has a negative supply voltage

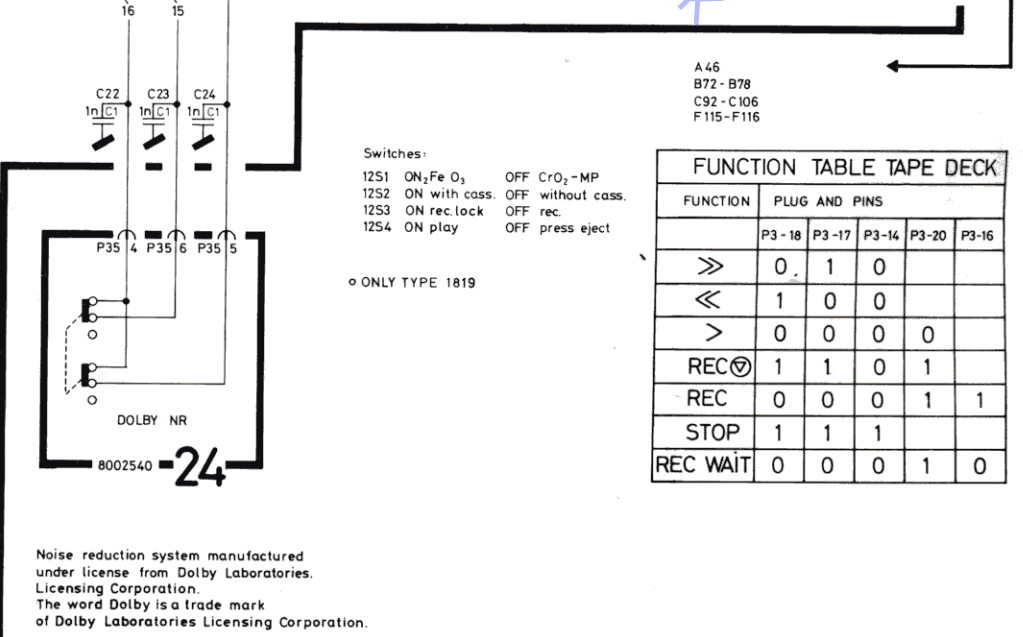
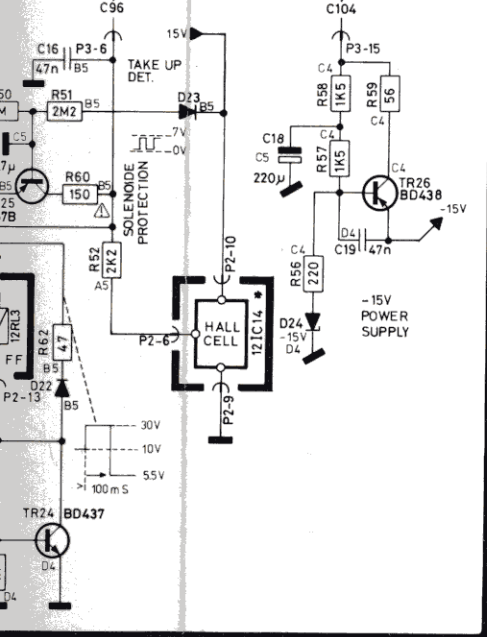
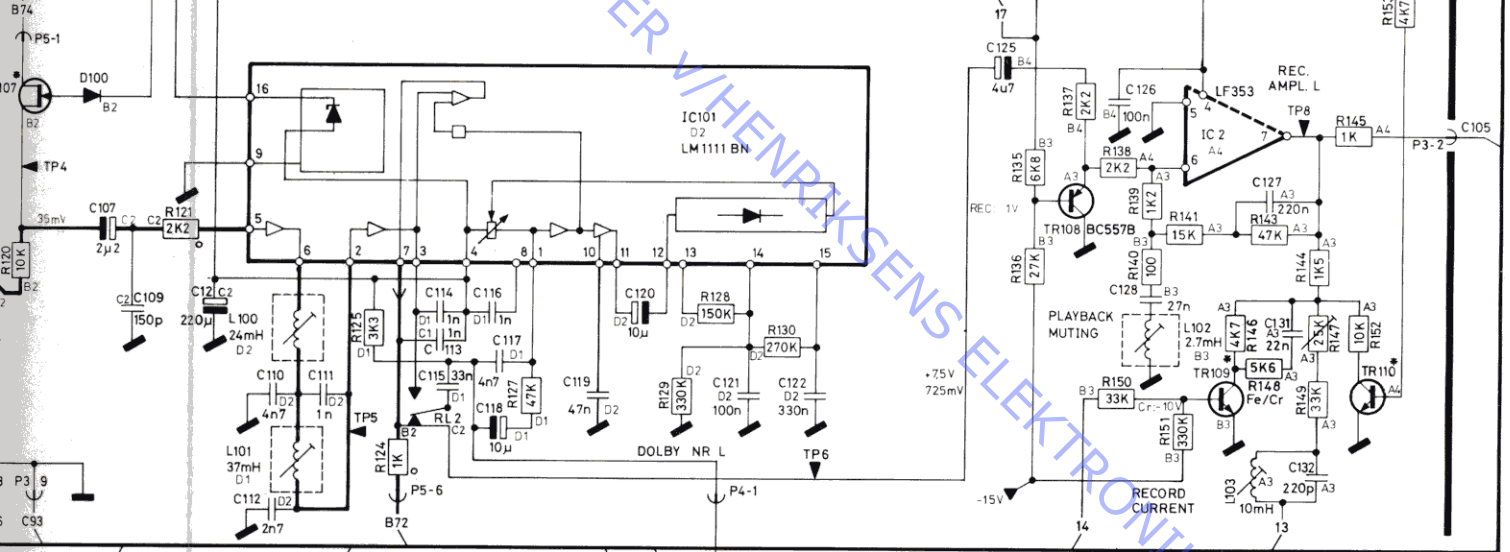
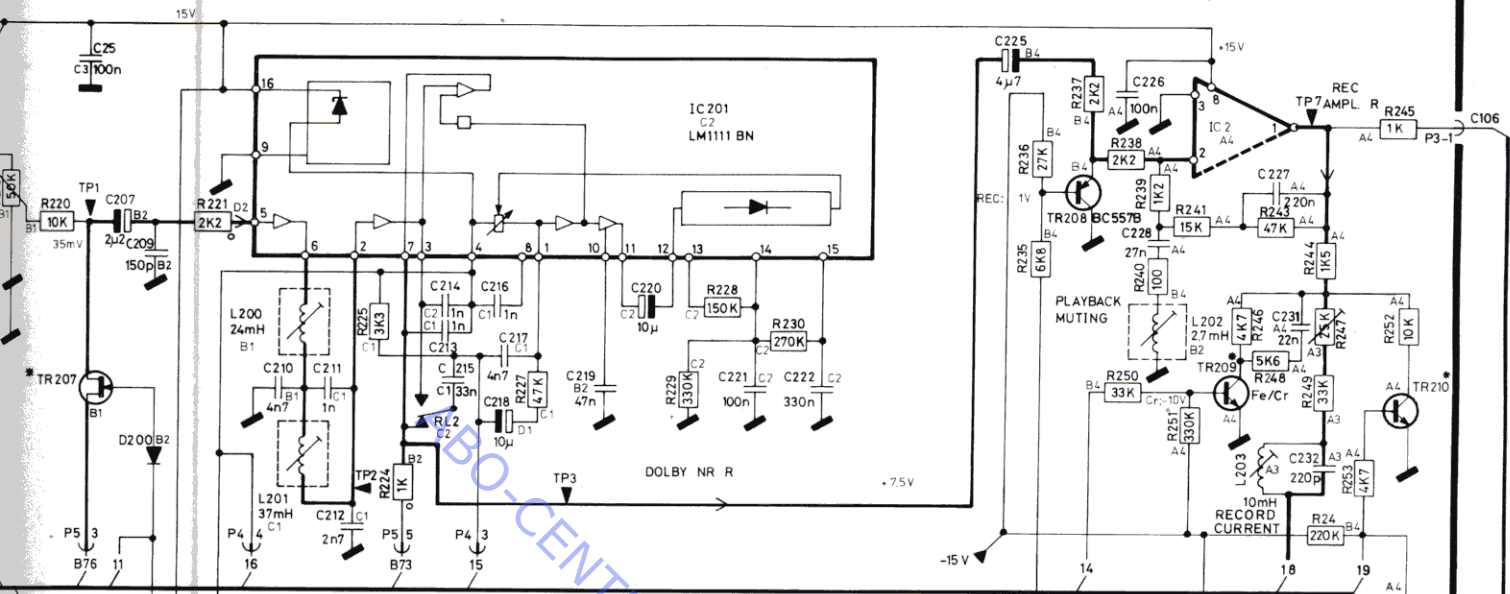


61-8002631





8004298 -11



- Switches:
- 1251 ON<sub>2</sub> Fe O<sub>3</sub> OFF CrO<sub>2</sub>-MP
  - 1252 ON with cass. OFF without cass.
  - 1253 ON rec lock OFF rec.
  - 1254 ON play OFF press eject

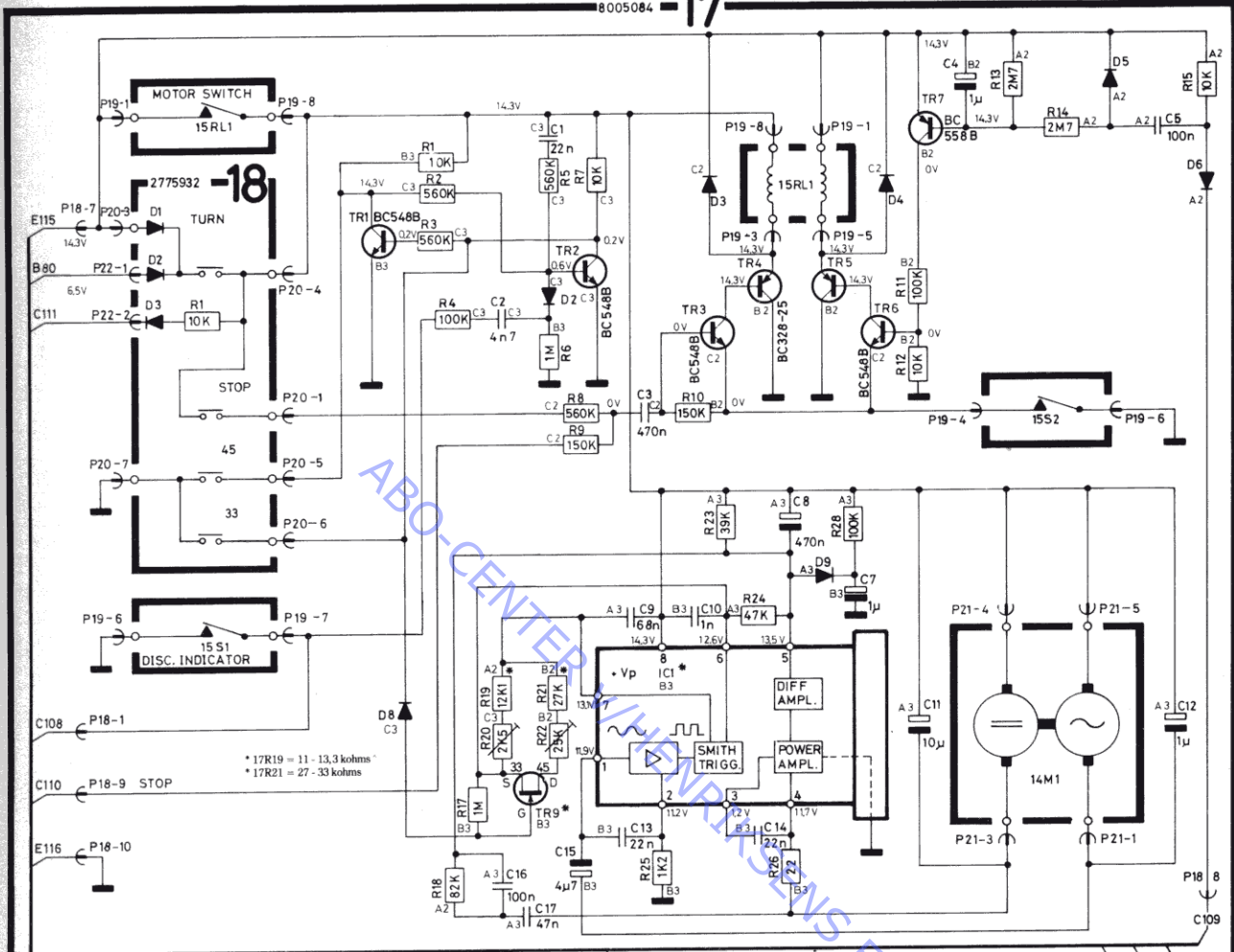
○ ONLY TYPE 1819

FUNCTION	PLUG AND PINS				
	P3-18	P3-17	P3-14	P3-20	P3-16
»	0	1	0		
«	1	0	0		
>	0	0	0	0	
REC	1	1	0	1	
REC	0	0	0	1	1
STOP	1	1	1		
REC WAIT	0	0	0	1	0

Noise reduction system manufactured under license from Dolby Laboratories Licensing Corporation. The word Dolby is a trade mark of Dolby Laboratories Licensing Corporation.



8005084 -17-



- \* 17R19 = 11 - 13,3 kohms
- \* 17R21 = 27 - 33 kohms

- |           |             |
|-----------|-------------|
| B80 - B83 | C108 - C111 |
| D113      | E115 - E116 |
- \*P.g.a. tolerancer i 17IC1 kan værdier af 17R19 og 17R21 variere mellem ovenstående værdier.  
Because of tolerances in 17IC1, 17R19 and 17R21 may vary between the above values.  
Wegen tolerenzen in 17IC1 können 17R19 und 17R21 zwischen den obengenannten werten variieren.

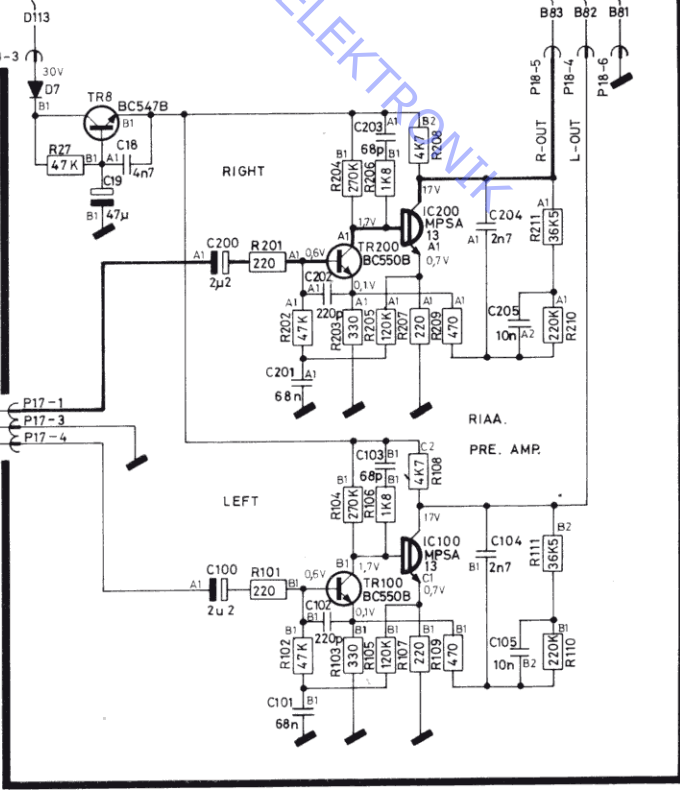
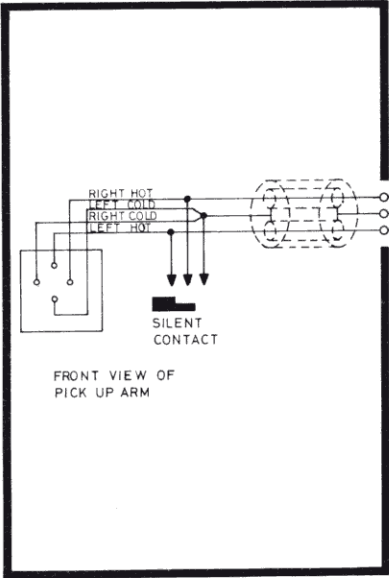


Diagram for Beocenter Terminal  
(Based on IC - SN 76831)

